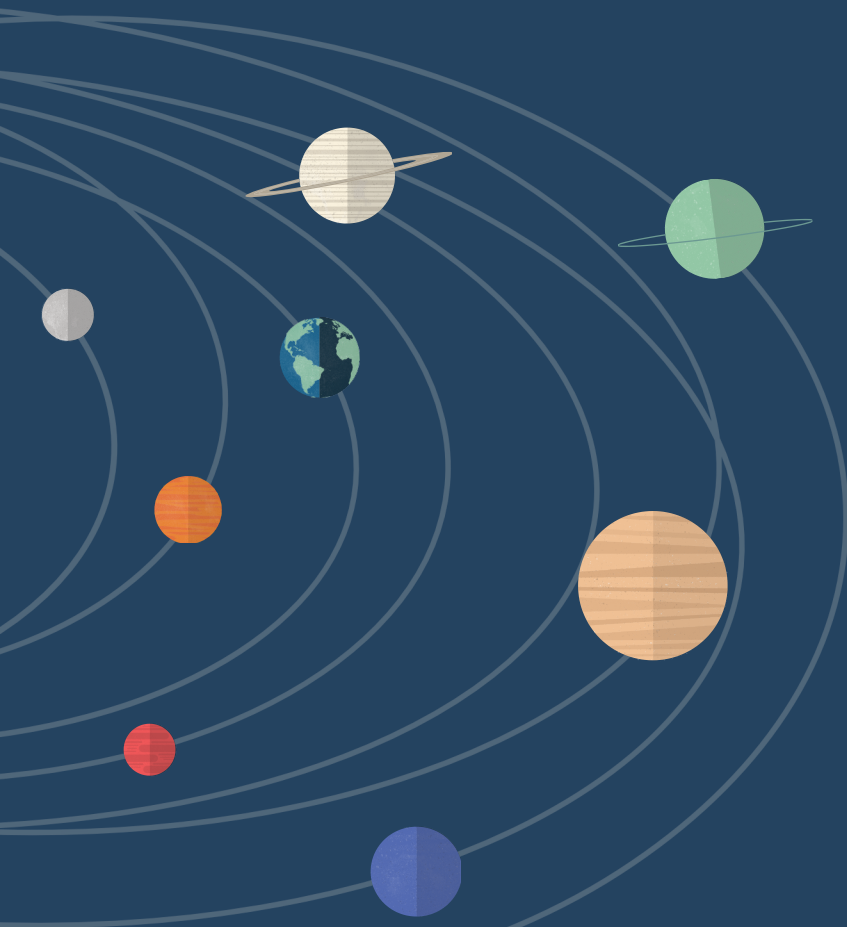


8th Interstellar Symposium

Entering Montreal: A Complete Guide



Contents

Introduction and Resources	1
----------------------------	---

Entering Canada

2

- Documents required
- Flying in
- Driving in
 - Different options
 - Crossing the border
 - Driving in Quebec

From YUL airport to downtown	6
------------------------------	---

- Bus options
- Taxi options

Public transit general information	7
------------------------------------	---

Introduction

Montreal, located in southeastern Canada, is situated on Montreal Island where the Ottawa and St. Lawrence rivers meet. It holds a significant place in Canadian history, having served as the capital of Canada from 1844 to 1849. As a major port for both oceangoing and inland shipping, Montreal showcases a dynamic cultural scene, including renowned theaters, concert halls, museums, and prestigious universities such as McGill, Concordia, Université de Montréal, and Université du Québec à Montréal.



The city's rich cultural fabric is shaped by its bilingualism, with both English and French being widely spoken throughout. Montreal stands as a vibrant center of French-Canadian industry and culture, with a name derived from Mount Royal, the hill on which it is built. Founded as Ville-Marie de Montréal in 1642 by the French, it later became part of the British North American empire in 1763. Montreal, historically known as Tiohtià:ke, has been a significant gathering place for various First Nations communities, adding to the city's diverse heritage.



McGill University is on land which has long served as a site of meeting and exchange amongst Indigenous peoples, including the Haudenosaunee and Anishinaabe nations. We acknowledge and thank the diverse Indigenous peoples whose presence marks this territory on which peoples of the world now gather.



Entering Canada

Documents required

Required documents vary according to each individual case. In most cases, a valid Canadian or U.S. passport is all that is needed to enter Canada. However, some exceptions may apply. The main rules are summarized here:



- [U.S. citizens](#) can use their U.S. passport to enter Canada. Please note that flying into Canada requires a full passport: passport cards may only be used if driving across the border.
- [Lawful permanent residents of the U.S.](#) require both a valid passport from their country of nationality AND any acceptable form of an official proof of status, such as a green card or other
- For more information about specific cases and [international travelers](#), acceptable proof of status and general border information, please consult the following Government of Canada's [webpage](#). (see resources)

Entering Canada

Driving in

If you do not have a passport but possess an **Enhanced Driver's License (EDL)** or an **Enhanced Identification Card (EIC)**, you can consider driving to Montreal instead of flying. These enhanced documents, available in certain US states and provinces, serve as an alternative to a passport for land and sea travel between the U.S. and Canada.

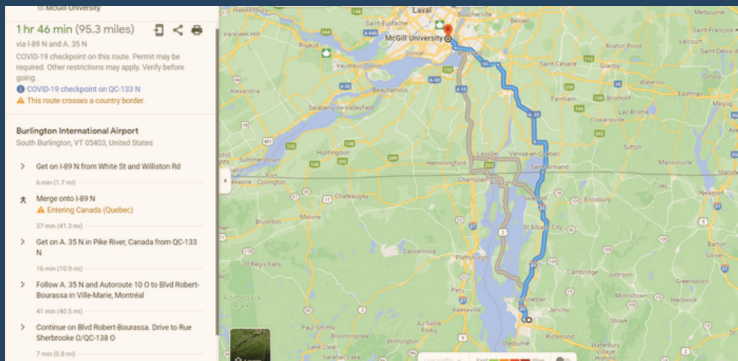
There is the option of flying into Burlington, Vermont, or Plattsburgh, New York. From there, you can easily make your way to Montreal by ground transportation. These options can result in a significantly cheaper airfare.

Burlington International Airport (BTV)

Location: Burlington, Vermont

Website: <https://www.btv.aero/>

Airline Partners: American, Delta, JetBlue, United, Sun Country Airlines.

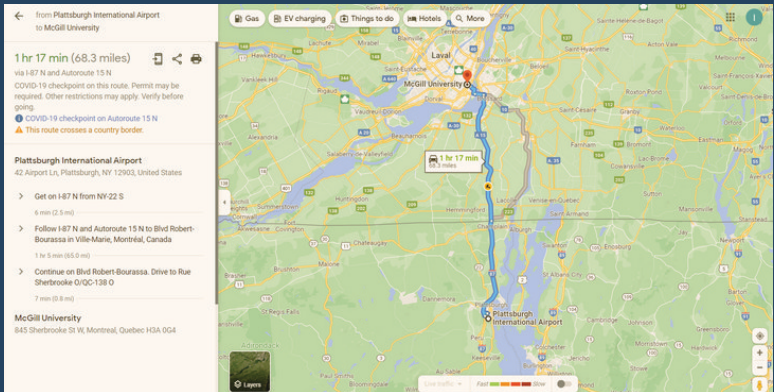


Plattsburgh International Airport (PBG)

Location: Plattsburgh, New York

Website: <https://www.flyplattsburgh.com/>

Airline Partners: Contour and Allegiant



Crossing the border

If you are 16 years or older and a citizen of the United States, you must possess either a Passport, a Passport Card, or an Enhanced Driver's License (issued only by specific states) in order to enter Canada. Please note that a passport card is a valid identification to enter Canada by land only, and that flying in requires a full passport.

Canada border service agency:

<https://www.cbsa-asfc.gc.ca/menu-eng.html>

Driving in Quebec

Important information:

- The speed limit is indicated in km/h in Canada and not in mph

	Towns	Rural road	Divided highways
Km/h	50	90	100
mph	31	56	62.5

For more information on traffic rules visit:

<https://www.quebec.ca/en/transport/circulation-securite-routiere/traffic-rules-tips-for-all-vehicles>

From YUL to downtown

Public transit

747 express bus

- Runs 24 hours a day, 7 days a week
- Goes from Montreal P-E Trudeau airport to downtown
- Shuttle ends its service at Berri-UQAM metro station
- Bus fares can be purchased from automated dispensers located at international arrival zones for 11\$ (CAD). These are valid for 24 consecutive hours.

Taxi services

- Between 5 AM and 11 PM, taxi services from the P-E-Trudeau airport to downtown cost a flat rate of 48.40\$ CAD.
- Between 11 PM and 5 AM, the rate increases to 55.65\$ CAD. Acceptable methods of payment include cash (Canadian currency only), Visa, Mastercard, and American Express credit cards.
- A dispatcher is available to help with limited mobility accommodations.

Using Uber

- It is also possible to request an Uber ride from the airport to downtown. This can be done via the Uber app or following this [link](#).

Using public transit in Montreal

- The Service de Transport de Montréal offers accessible, affordable public transportation services to most places around the city. Besides several bus lines, Montrealers also commonly use the metro. Different fare options (including a 3-day unlimited option) can be found [here](#).
- The Montreal metro comes in 4 lines: orange, green, blue and yellow. The McGill station lies on the green line, and there are several stations where these lines intersect, as seen on the map below.
- Metro line directions are denoted by the terminus station. For example, to go from Station McGill to Station Vau, the green line must be taken in the Honoré Beaugrand direction.
- IMPORTANT: Rental of cars to get from the YUL airport to downtown is strongly discouraged. Cars will not be required to attend any Symposium events. Parking is not an option at McGill University, and parking at hotels can cost \$30 CAD/day or more.

